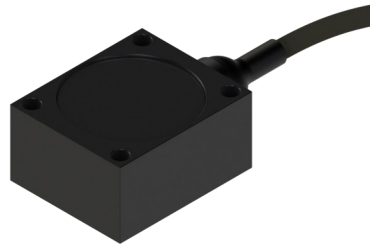


## KAFT SERIES HIGH BANDWIDTH ACCELEROMETER



The KAFT Series of High Bandwidth Miniature Accelerometers offer a compact and robust solution for the motorsports and automotive testing industry.

The sensor offers 1, 2 or 3 Axis of measurement with integral signal conditioning to give a standard signal of 0.5 to 4.5V; ideal for most data acquisition systems.

Supply voltage can be 5V or 8-16V with low current consumption of less than 30mA.

With a bandwidth of zero to 4000Hz (range dependent) these sensors are useful for applications within component, full vehicle testing and development programs.

### TECHNICAL SPECIFICATIONS

<b>Range (g)</b>	Standard Ranges: 5, 10, 20, 50, 100
<b>Bandwidth</b>	Ranges 5, 10g: 0-1500Hz Ranges 20, 50, 100g: 0-4000Hz
<b>Resonant Frequency</b>	5kHz for 5, 10g 20kHz for 20, 50, 100g
<b>Safe Over Range</b>	±5000g
<b>Accuracy</b>	<±0.25% FS Linearity
<b>Cross Axis Sensitivity</b>	<±2% FS
<b>Thermal Effects</b>	Zero ±0.03% FS/°C (Sensitivity ±0.03% of Reading /°C)
<b>Output</b>	0.5V to 4.5V (Offset 2.5V)
<b>Supply</b>	5V (±0.5V) Ratiometric or 8-16Vdc
<b>Operating Temperature Range</b>	-40°C to +125°C
<b>Compensated Temperature Range</b>	0°C to +100°C
<b>Noise</b>	>30ug/√Hz
<b>Construction</b>	Anodised Aluminium
<b>Electrical Connection</b>	50cm or 100cm, 55Spec, 26AWG Cable + DR25 Sleeve
<b>Protection Class</b>	IP66
<b>EMC Protection</b>	EN 50082-1
<b>Weight</b>	<30g (Excluding Cable)
<b>Options</b>	Connector Fitted and Part Number Labelling

KA Sensors adopts a continuous development program which sometimes necessitates specification changes without notice.

## Sensors For Motorsport

### Features

- High Bandwidth
- ±5g to ±100g
- 1,2 or 3 Axis Outputs
- DC Response
- Rugged Design
- Built-In Amplifier

### Applications

- Structural Analysis
- Aero Performance
- Suspension Test
- Road Load Data

kasensors.com  
sales@kasensors.com  
+44(0)1476 568057

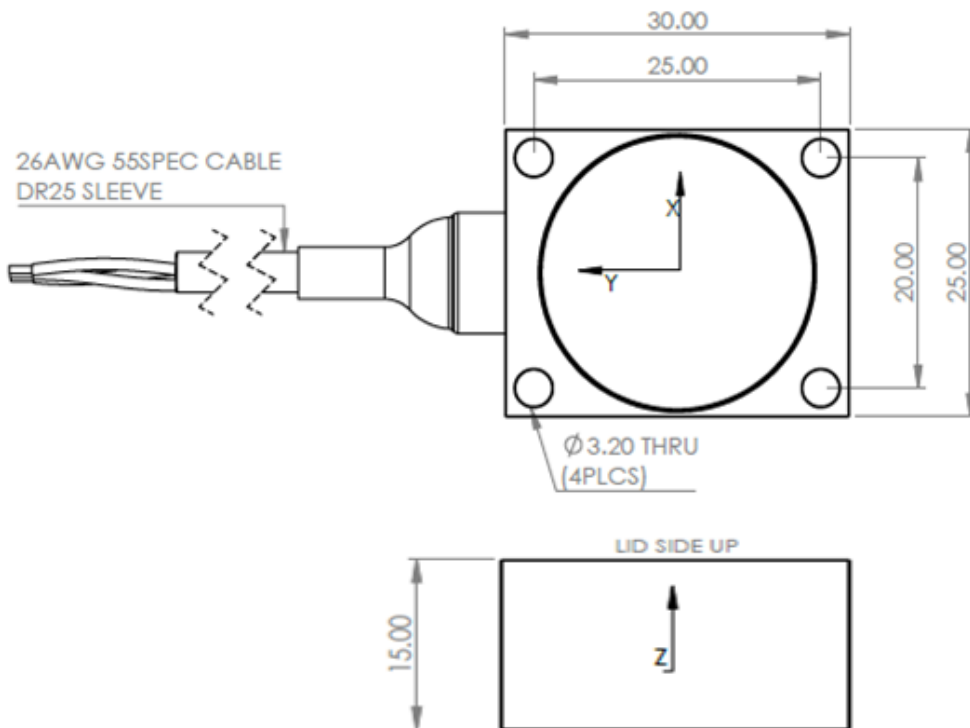
KAFT 07.20

# PART NUMBER CONFIGURATOR

	<b>KAFT</b>	-	<input type="text"/>	-	<input type="text"/>	-	<input type="text"/>	-	<input type="text"/>	-	<input type="text"/>	-	<input type="text"/>	-	<input type="text"/>
<b>Range (<math>\pm</math>g)</b>	5	005													
	10	010													
	20	020													
	50	050													
	100	100													
<b>Supply</b>	5V								4						
	8-16V								5						
<b>Number of Axis</b>	3: X,Y,Z														3XYZ
	2: X,Y														2XY
	2: X,Z														2XZ
	2: Z,Y														2ZY
	1: X														1X
	1: Y														1Y
	1: Z														1Z
<b>Cable Length</b>	50cm, 55Spec, 26AWG Cable+DR25 Sleeve														050
	100cm, 55Spec, 26AWG Cable+DR25 Sleeve														100
<b>Special Code</b>	None														000

The KA configuration tool is used to specify a standard KA Sensor, other options are available.

## MECHANICAL DETAILS



## CONNECTION DETAILS

+Ve Supply	0V Supply	Output (X)	Output (Y)	Output (Z)
Red	Black	White	Blue	Green

*Sense  
Analyse  
Control*

Services for:

- Data Logging
- Telemetry
- Controls
- Wiring

Contact us

KA Sensors Ltd  
Unit 14 & 15  
The Old Malthouse  
Springfield Road  
Grantham  
Lincolnshire  
United Kingdom  
NG31 7BG

kasensors.com  
sales@kasensors.com  
+44(0)1476 568057

KAFT 07.20